

CONSOLE

 **MANNI** GROUP

= il prisma =
DESIGN HUMAN LIFE

LAGO

CAPSULE

Modular structure to be adjoined to an existing building to increase available space and generate new use scenarios.

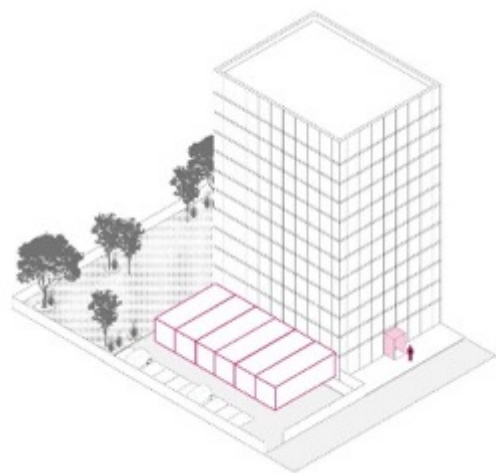


The urgency to reconsider the places of modern life in which man seeks beauty, sustainability and easy use of space and technology is an issue that has emerged forcefully during the pandemic. The Covid-19 emergency, however, is also an opportunity to take an innovative action, which goes beyond the crisis and opens up new chances hitherto unexpressed.

Three *Made-in-Italy* companies have taken up the challenge: Verona historic industrial establishment **Manni Group**, design company **Il Prisma** and the **Lago** design brand. Together, they joined forces to create **CAPSULE**, a modular structure capable of flexibly meeting today's needs - but not only.

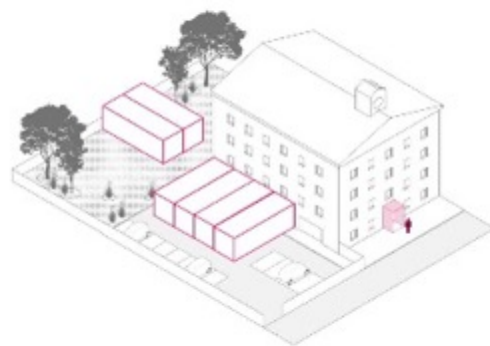
MEETING TODAY'S NEEDS





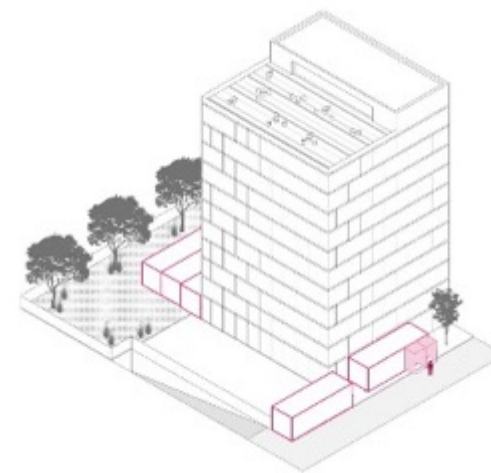
Entrance check-in
 Office space
 Meeting rooms
 Break area
 Storage

OFFICE



Entrance check-in
 Classrooms
 Meeting rooms
 Library
 Laboratory

EDUCATIONAL

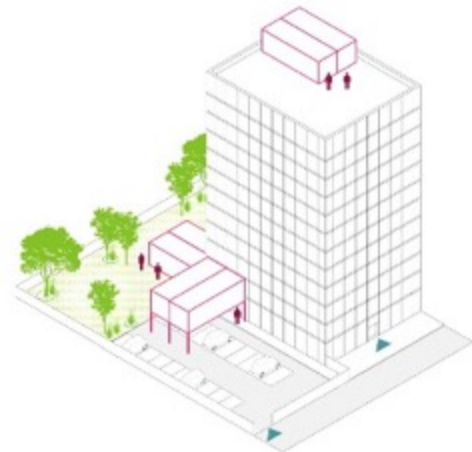


Check-in
 Goods check-in
 Dining add-on
 Meeting rooms
 Storage



SEIZING TOMORROW'S OPPORTUNITIES

Thanks to new safe, comfortable settings, **CAPSULE** can meet the need to increase the space available to people in existing buildings. The option to reconfigure the module according to various needs enables its relocation and reuse also in a post-Covid stage. **CAPSULE** is, therefore, a further opportunity to increase the value of buildings and the quality of urban spaces.



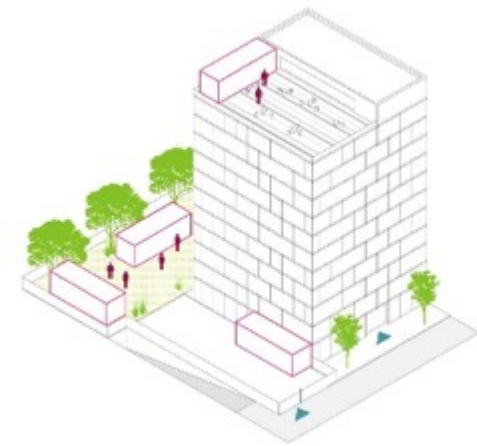
Lounge area
Co-working
Meeting rooms
Socializing area
Showroom

OFFICE



Gym
Music room
Conference rooms
Silent rooms
Coffee bar

EDUCATIONAL



Events room
Dining add-on
Guest room
Wellness room
Fitness room



THE DESIGN CONCEPT BEARS IL PRISMA SIGNATURE

Attention to human beings and their ways of experiencing spaces have always been the focus for the design of **Il Prisma**, chosen by Manni Group as a partner to develop the concept design. Designing *CAPSULE* has made it possible to create a modular space capable of fulfilling the customer's needs in a flexible way whilst proposing new experiences and contexts of use.

= il prisma =
DESIGN HUMAN LIFE

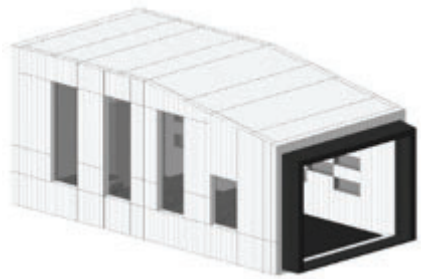
LAGO

LAGO TAILOR-MADE INTERIOR DESIGN

By leveraging *CAPSULE* modular, flexible and repeatable features, Manni Group identified **Lago** as the ideal interior design partner that could suit the module in a natural way, as well as enhancing its functionality. The design operation was mainly focused on a schedule of display and containment items based on the **Air** (*Air Shelf and Air Storage*) system that can be freely tailored to customer needs.

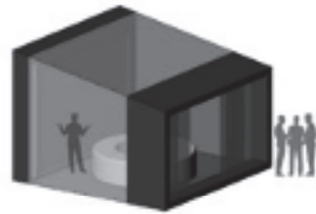


FLEXIBILITY AND TRANSFORMABILITY



BASLINE MODULE

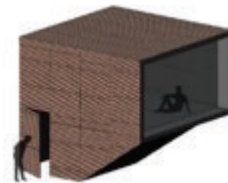
OPEN SPACE OFFICE



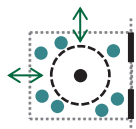
WELCOME MODULE



SOCIAL MODULE



SECRET ROOM MODULE



**MAXIMUM EXTERIOR/
INTERIOR VISIBILITY
AND BRAND
RECOGNITION**



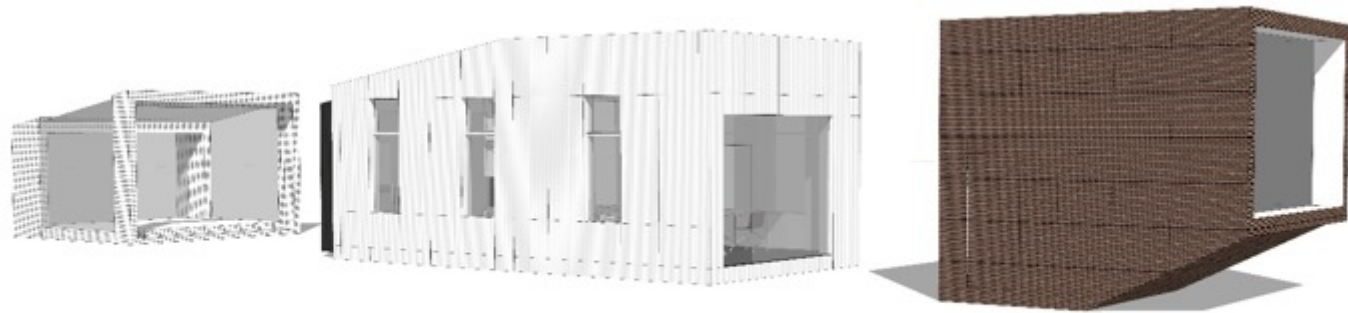
**FLEXIBILITY IN
OPENING TO THE
OUTSIDE**



**INTROSPECTIVE
SPACE**

As a result of its high level of **liveability** and **flexible** design, **CAPSULE can indeed be transformed and relocated**. A pre-assembled light steel bearing structure, completed with diverse cladding solutions and systems that make it almost completely **self-sustainable**, can **accommodate a wide variety of activities** from the office, residential, retail, park and hospitality world.





BASELINE + SPECIAL MODULES

POSSIBLE COMBINATIONS



BASELINE MODULE



LONGITUDINAL SECTION



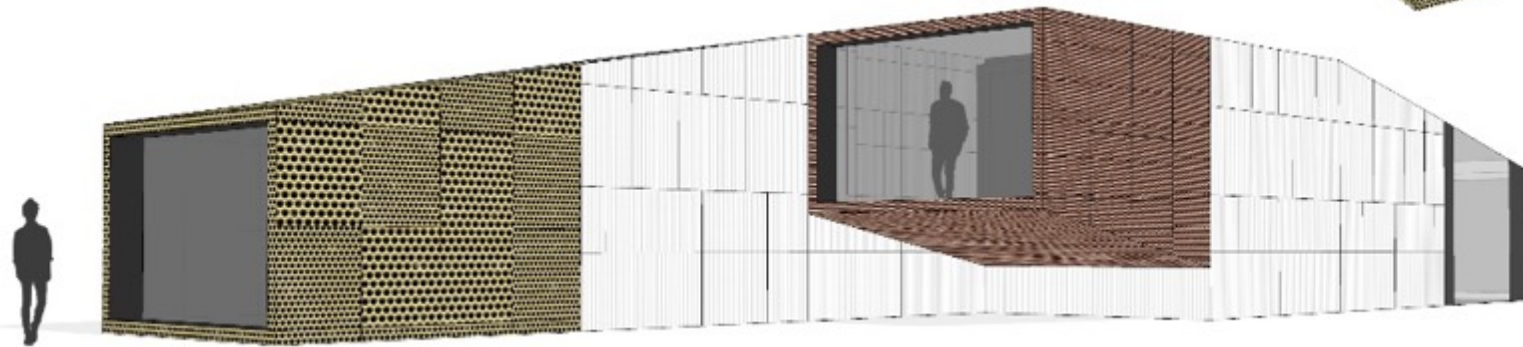
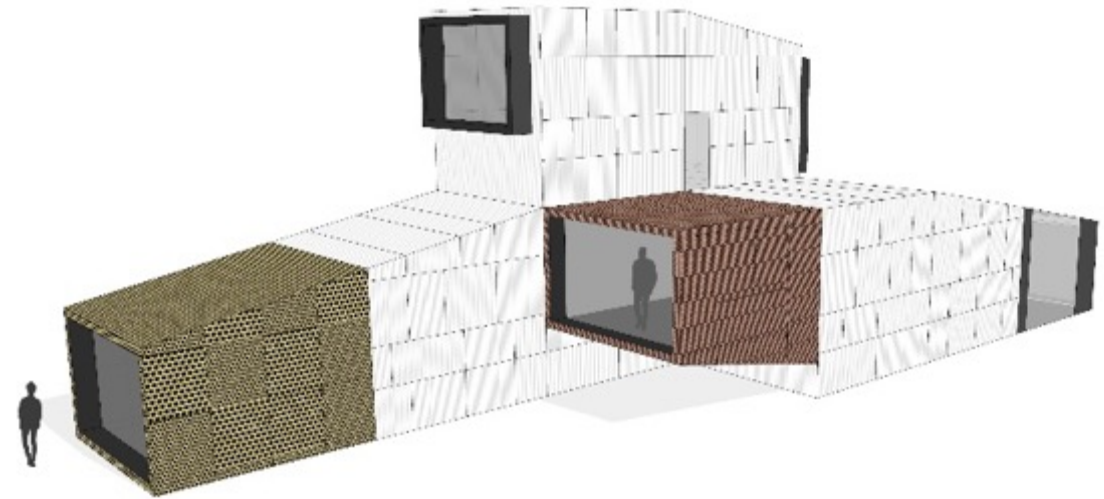
BASELINE MODULE



LONGITUDINAL SECTION

BASELINE + SPECIAL MODULES

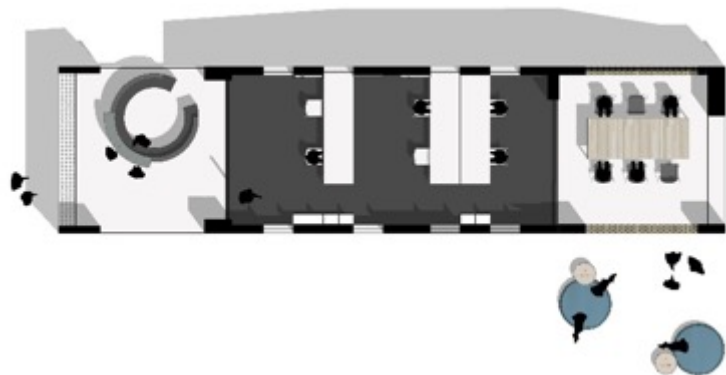
POSSIBLE MULTI-COMBINATIONS



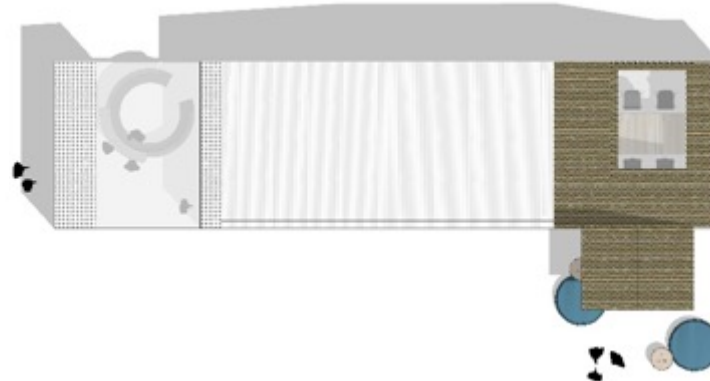


ITALIAN EFFICIENCY AND DESIGN

The purely functional soul of **prefabricated systems** is combined with qualitative issues related to “know-how” and **Italian design**. The spaces are designed to ensure safety and comfort for the people who will be inhabiting and using them.



**BASELINE + WELCOME
+ SOCIAL MODULES**



The study of proportions and relations with the external space, combined with a proven level of technological engineering, results in the creation of a **dynamic but durable, sustainable and appealing system**.

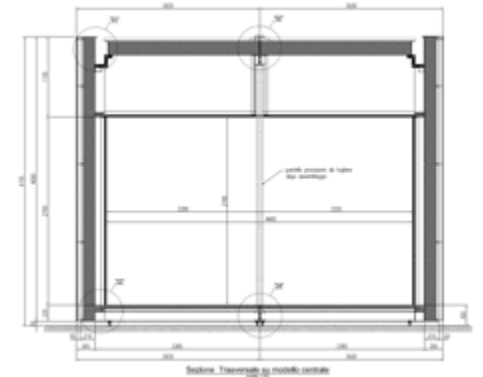
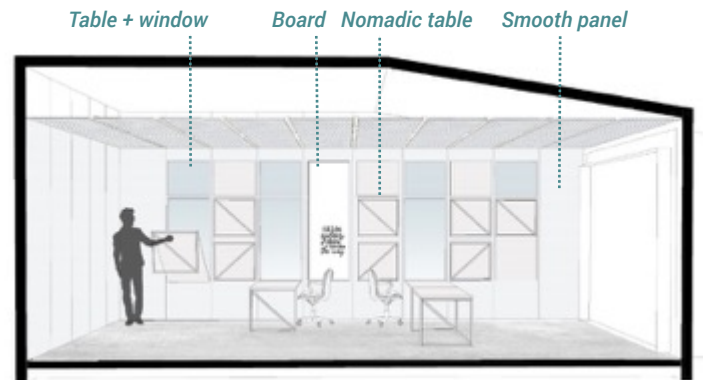




IMPLEMENTATION SPEED

The module, in its various configurations, was designed using systems and technologies already existing on the market, albeit a certain degree of customisation was required to make it a **unique object**.

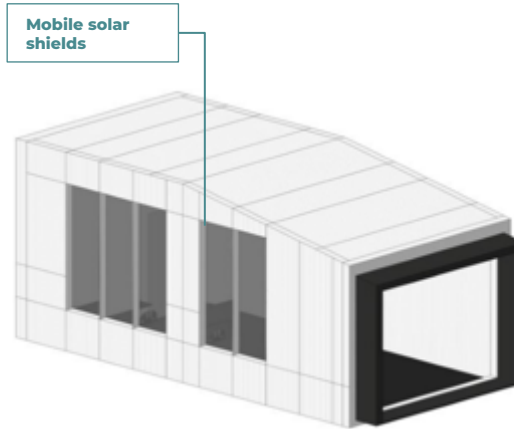
Highly engineered solutions allow for **great speed in the design and on-site construction** of CAPSULE, conceived to be not only simply a temporary structure, but also one **durable over the years**.



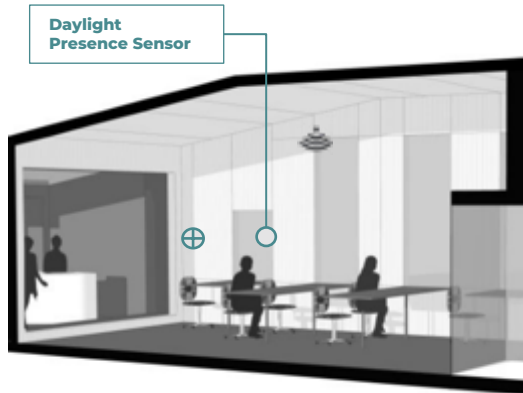


BASELINE MODULE

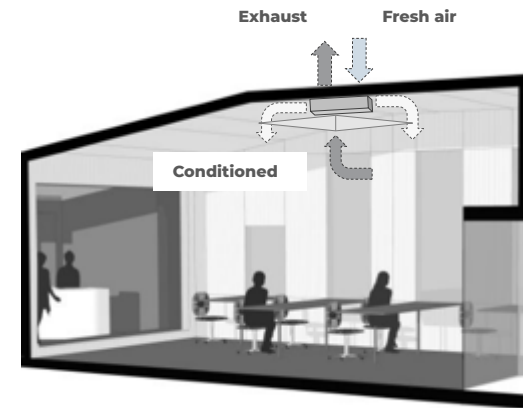
INTEGRATED SYSTEMS + TECHNOLOGY



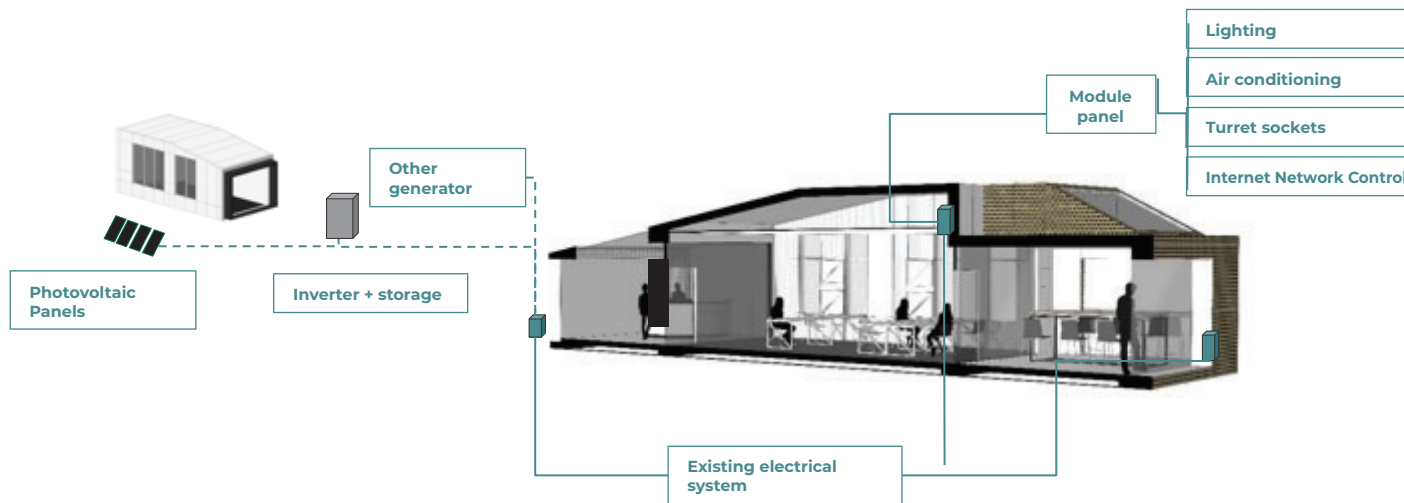
1. Solar shields to control thermal gains and lighting, including shadows automatic drive units on temperature control and natural light refraction/filter
2. Possible window open/close drive unit for natural ventilation



1. Standard high energy saving LED light
2. Integrated control with daylight and presence sensors for pre-set programs (settings, high energy saving mode, presentation/cinema/conference mode, etc.)
3. Wall control buttons: lights, curtains, windows (wireless and automated)
4. Lux/occupancy sensors: light and white adjustment are managed according to the circadian cycles



1. Air conditioning system with dedicated indoor units concealed in the false ceiling
2. Humidity+temperature+co2+Voc sensors – connected to the ALARMING and air conditioning systems
3. Controlled mechanical ventilation with heat recovery and air filtration. Installation of active air sanitisation devices on delivery channels
4. Integration via SW protocol for set point setting: temperature, humidity, co2, scheduler + integration with wireless sensors
5. Possible free cooling in START & STOP optimized in accordance with the booking system (predictive) and weather forecast

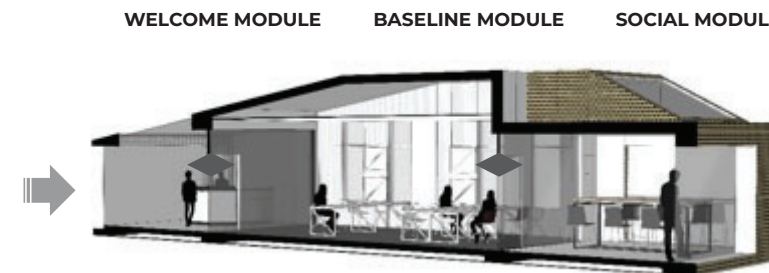


1. Dedicated electrical system with mains power supply, three-phase, electrical protective devices included
2. Possible integration with the photovoltaic system or other generators, energy Apps for production, consumption and storage
3. All electrical panels are monitored for ALARMS and CONSUMPTION by the IOT platform – protection/user statuses

4. Identification via booking (NFC) or other ID
5. Video analyses for temperature, masks checks
6. Possible spray sanitising cabin
7. Access booking app
8. Magnetic contacts between one module and another for module recognition and matching – composition logics

BASELINE MODULE + SPECIAL MODULES

INTEGRATED SYSTEMS +
IOT TECHNOLOGY



CAPSULE
WORKPLACE

CAPSULE witnesses
its first relevant
application in the
workplace world.



Lago investigates design in a systemic way and manufactures not only single products but also a range of versatile, integrable modular systems to furnish all rooms in the house and the spaces beyond the home boundaries.

LAGO



The strength of LAGO furnishings lies in simplicity, thanks to essential shapes and styles, and modularity as well as architectural mimesis. They express an inherent ability to dialogue with different styles and contexts and come in infinite geometries and sizes to be enriched with 32 innovative colours and materials.

LAGO





= il prisma =
DESIGN HUMAN LIFE

Il Prisma is an international architecture and design company, with an all-Italian DNA, which designs spaces and experiences for humans.

The company is based in London, Milan, Rome and Lecce, and features 3 Business Units: Cityscape (architecture), Worksphere (Workplace) and Destination (Retail & Hospitality).

Il Prisma Milano S.p.A
Via Olmetto, 9 20123 Milan – Italy
T _ +39 02 917595.11

WWW.ILPRISMA.COM

The logo consists of the word "LAGO" in a bold, white, sans-serif font, centered within a solid black rectangular background.

LAGO

Lago designs and manufactures Made-in-Italy furniture, offering modular design furniture, suitable not only for all areas in the house but also for community spaces, such as hotels, restaurants, shops and work spaces. The design dynamism and flexibility of Lago modular systems enable you to create countless furnishing compositions, giving each room a unique, innovative look.

Lago is active in over 20 countries worldwide with over 900 selected stores, including several single-brand ones and more than 250 projects for hotels, B&Bs, commercial spaces, restaurants, bars and offices in Italy and abroad, in cities such as Milan, London, Paris, Saigon.

**LAGO SpA / Via Artigianato II,
21, 35010 Villa del Conte (PD)**

WWW.LAGO.IT